

# Approaches to Analysis

C. Alex Simpkins Jr., Ph.D



RDPRobotics LLC,

UC San Diego, Department of Cognitive Science

[rdrobotics@gmail.com](mailto:rdrobotics@gmail.com)

[csimpkinsjr@ucsd.edu](mailto:csimpkinsjr@ucsd.edu)

Lectures : [http://casimpkinsjr.radiantdolphinpress.com/pages/cogs108\\_ss1\\_23/index.html](http://casimpkinsjr.radiantdolphinpress.com/pages/cogs108_ss1_23/index.html)

# Course Reminders

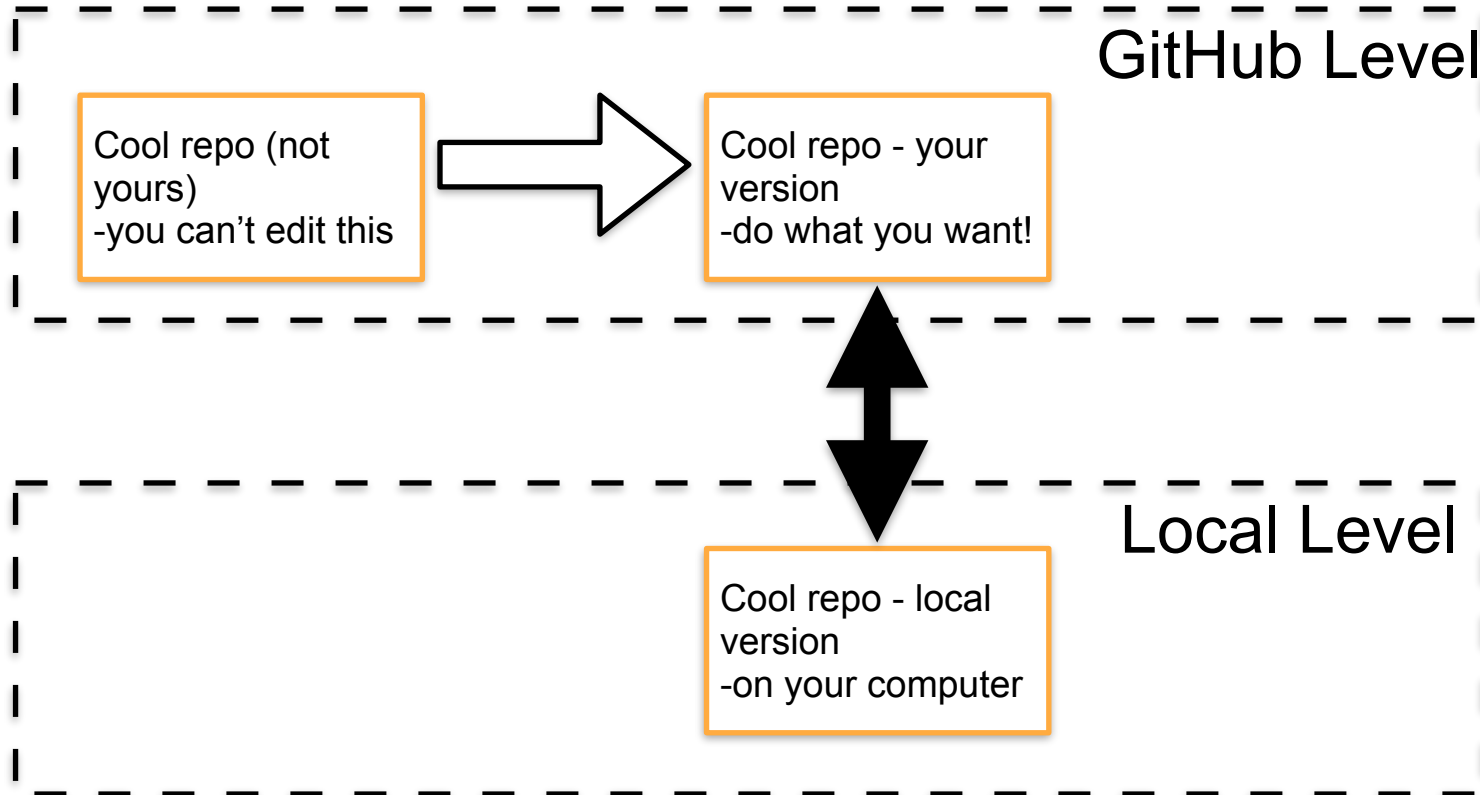
- Due Friday 7/14 (11:59 PM)
  - D1, D2, Q1
  - Previous project review
  - Project proposal

# Git discussion about Forking

- Some confusion on it, let's discuss, TAs are preparing some tutorial type links and resources
- Can't edit this but you can see it.
  - You can later ask them to incorporate changes you make to a clone you do locally, but you can't just change this one since it belongs to them
  - What do we do if we want to use github to make our own version with version control?

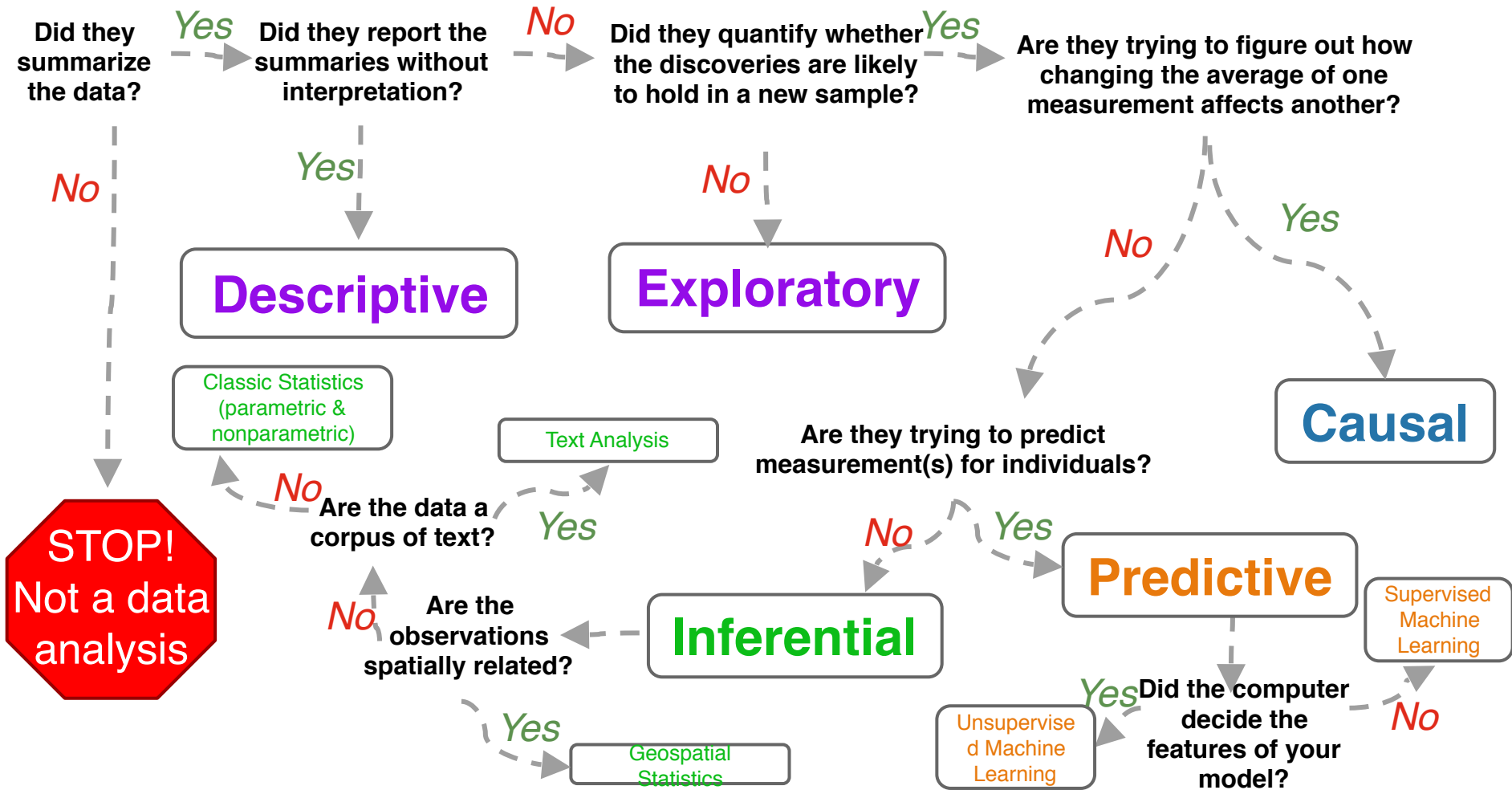
Cool repo (not yours)  
-you can't edit this

# Fork it!



*“Data science is the process of formulating a quantitative question that can be answered with data, collecting and cleaning the data, analyzing the data, and communicating the answer to the question to a relevant audience.”*

To do this, you have to  
*look at, describe, and  
explore the data*



**STOP!**  
Not a data analysis

**Descriptive**

Classic Statistics  
(parametric & nonparametric)

**Exploratory**

Text Analysis

**Causal**

**Predictive**

Supervised Machine Learning

**Inferential**

Unsupervised Machine Learning

Geospatial Statistics

# Summary: Analytical Approaches

1. **Descriptive** (and **Exploratory**) Data Analysis are the first step(s)
2. **Inference** establishes relationships
  - a. Classic Statistics
  - b. Geospatial Analysis
  - c. Text Analysis
3. Machine Learning is for **prediction**
  - a. Supervised
  - b. Unsupervised
4. Experiments best way to establish the likelihood of **causality**
  - a. Remember you **cannot** establish causality with computational methods only correlations along with statistical beliefs
  - b. More you are establishing if they are NOT related or 'NOT NOT' related

# Exploring Analyses

---



General question: What impacts politics in America?

Data Science question: Is there a relationship between the sentiment of political words in South Park and America's presidential approval rating?

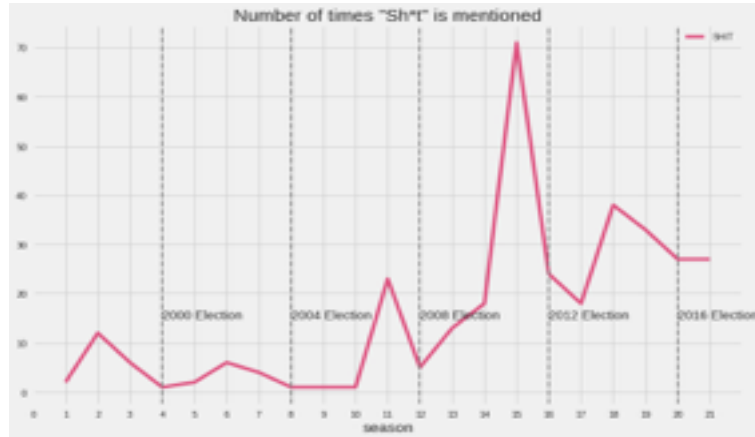
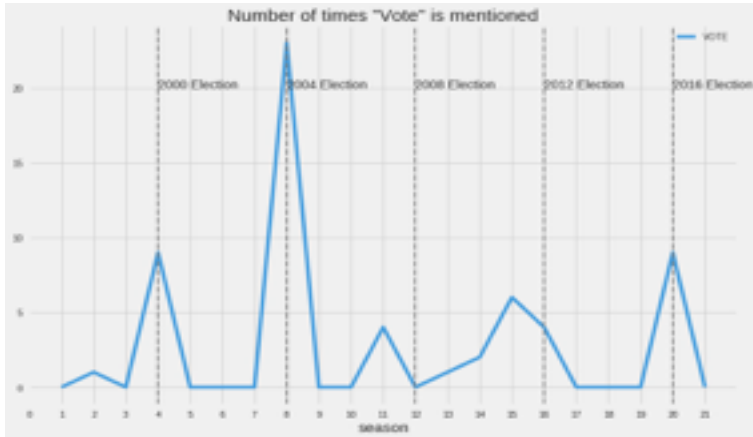
Exploratory

Predictive

Inferential

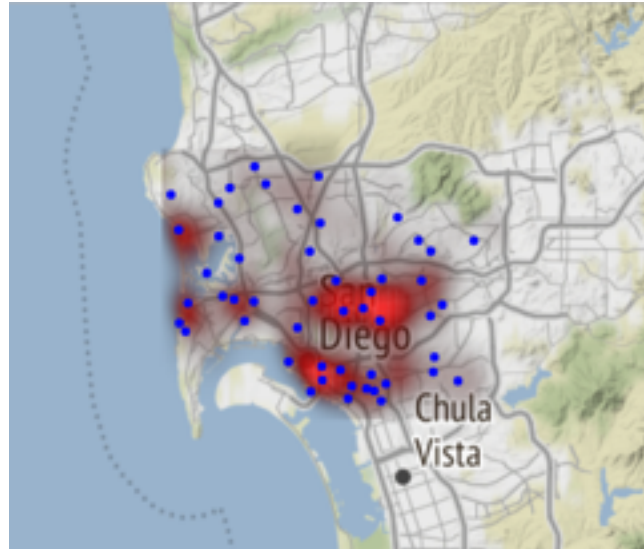
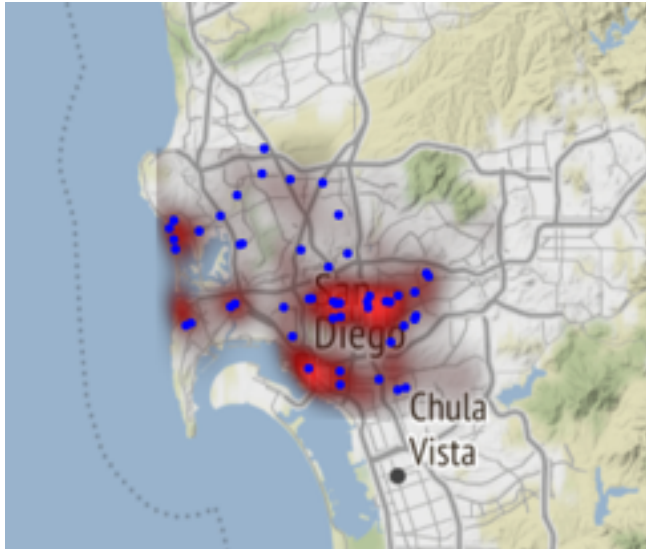
Text Analysis

Classic Statistics  
(parametric &  
nonparametric)



General question: Why isn't police response time always the same?

Data Science question: Where should police cars be stationed, accounting for crime levels and time of day, to make police response times equitable throughout San Diego?



**Descriptive**

**Exploratory**

**Predictive**

**Inferential**

Geospatial Analysis

General question: How has COVID-19 impacted students?

Data Science question: At UCSD, is there a difference between students' grades and how they rate their classes before COVID-19 and during remote learning, due to COVID-19?

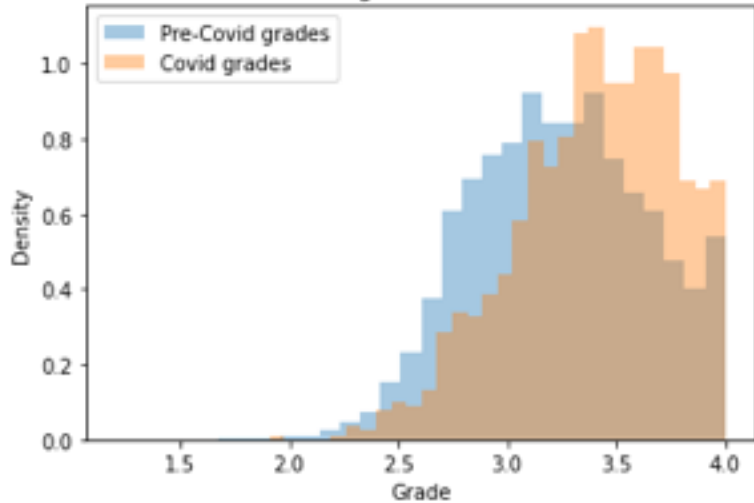
Exploratory

Predictive

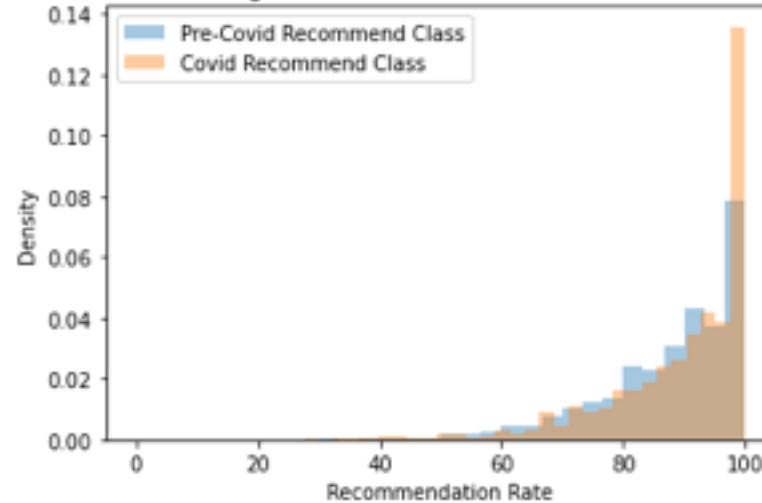
Inferential

Classical  
Statistics

Histogram of Grades

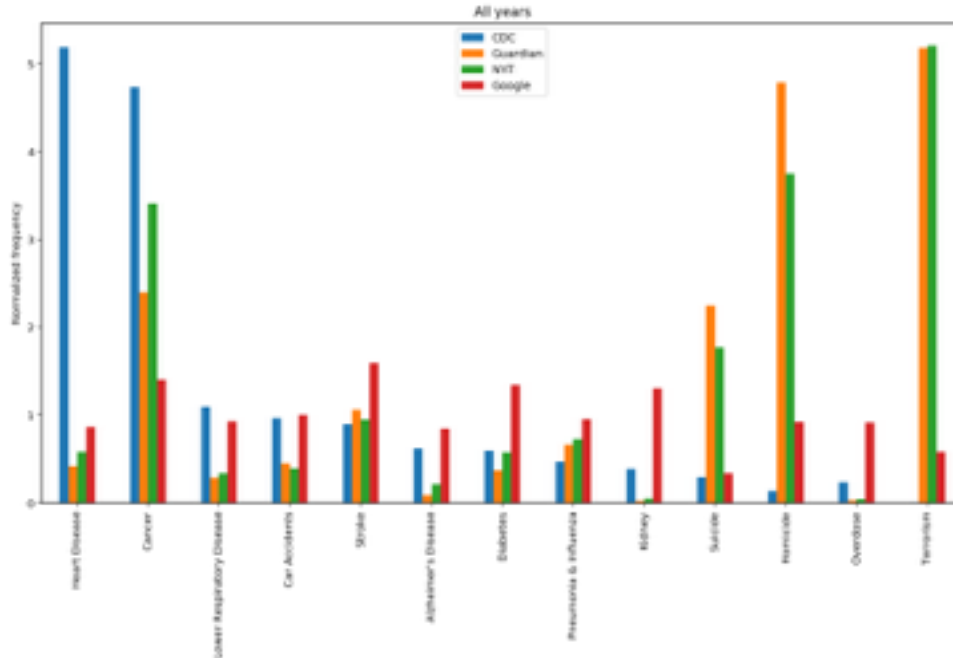


Histogram of Class Recommendation Rate



General question: What gets too much attention in the news?

Data Science Question: Is there a relationship over time between cause of death terms in the *NYT*, *The Guardian*, and Google trends data relative to data from the CDC?



Descriptive

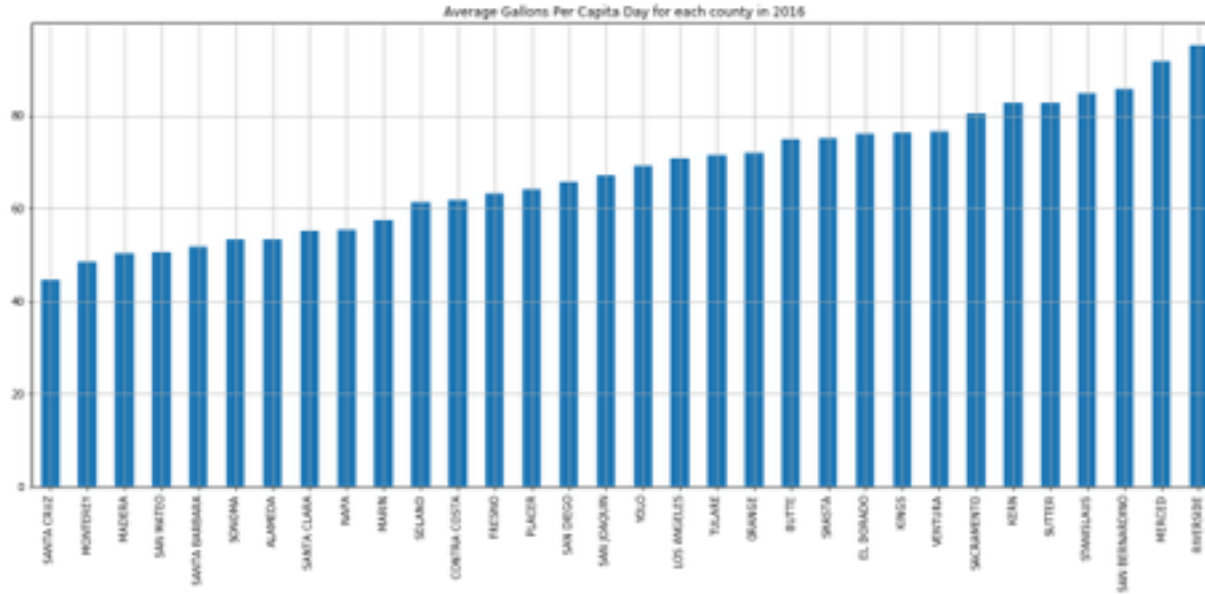
Exploratory

Inferential

Text Analysis

Classic  
Statistics  
(parametric &  
nonparametric)

*In case of the total drought in California, how many desalination plant projects do we need in order to supply residential use water for the population who live in urban areas in California?*



**Descriptive**

**Exploratory**

**Predictive**